

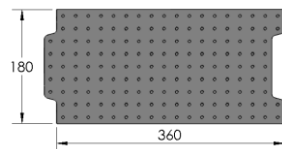
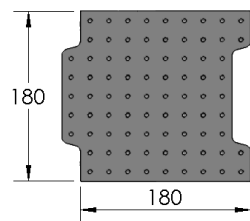
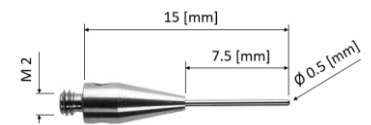
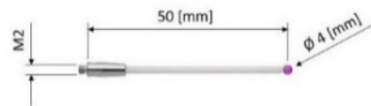
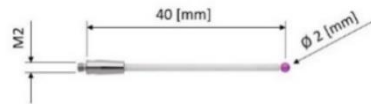
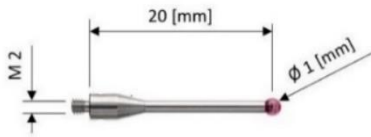
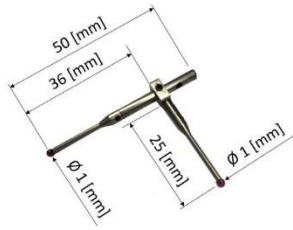
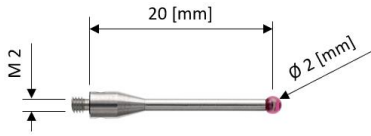
Accessoires | Zubehör | Accessories

C-Line

Machine de mesure tridimensionnelle (MMT) portable
Tragbares Koordinaten-Messmaschine (KMG)
Portable coordinate measuring machine (CMM)



<p>TA-EL-904 334 0054</p>	<p>Adaptateur Sub-D/Ethernet Adapter Sub-D/Ethernet Adaptateur Sub-D/Ethernet</p>
<p>TA-EL-906 332 04 0003</p>	<p>Câble Ethernet 2m Ethernet Kable 2 m Ethernet cable 2 m</p>
<p>TA-EL-903 334 0058</p>	<p>Adaptateur Sub-D/WIFI pour C-Line Adapter Sub-D/WIFI für C-Line Adaptor Sub-D/WIFI for C-Line</p>
<p>TA-MS-905 709 02 901</p>	<p>Palpeur à stylets vertical & horizontal Ø2 mm Vertikaler und horizontaler Messtaster Ø2 mm Probe set with vertical & horizontal stylus Ø2 mm</p>
<p>TA-MS-903 709 02 900</p>	<p>Palpeur à stylets vertical & horizontal Ø1 mm Vertikaler und horizontaler Messtaster Ø1 mm Probe set with vertical & horizontal stylus Ø1 mm</p>
<p>TA-MS-906 709 02 903</p>	<p>Module de palpation TP20 Force Standard Tastsystem-Modul TP20 Standardstärke TP20 probing module standard force</p>
<p>TA-MS-904 709 02 902</p>	<p>Module de palpation TP20 Force Faible Tastsystem-Modul TP20 Geringstärke TP20 probing module Low Force</p>
<p>TA-MI-905 709 05 902</p>	<p>Stylets vertical & horizontal Ø2 mm Vertikaler und horizontaler Tasterein Ø2 mm Stylus vertical & horizontal Ø2 mm</p>



<p>TA-MI-901 709 05 903</p>	<p>Styler bille rubi Ø2 mm, tige acier, L 20 mm</p> <p>Kugelschreiber rubi Ø2 mm, Schaft aus Stahl, L 20 mm</p> <p>Ruby ball Ø2 mm stylus, stainless steel stem, L 20 mm</p>
<p>TA-MI-906 709 05 900</p>	<p>Stylets vertical & horizontal Ø1 mm</p> <p>Vertikaler und horizontaler Tasterein Ø1 mm</p> <p>Stylus vertical & horizontal Ø1 mm</p>
<p>TA-MI-902 709 05 901</p>	<p>Styler bille rubi Ø2 mm, tige carbure de tungstène, L 20 mm</p> <p>Kugelschreiber rubi Ø1 mm, Schaft aus Wolframkarbid, L 20 mm</p> <p>Ruby ball Ø1 mm stylus, tungstene carbide stem, L 20 mm</p>
<p>TA-MI-903 709 05 904</p>	<p>Styler bille rubi Ø2 mm, tige céramique, L 40 mm</p> <p>Kugelschreiber rubi Ø2 mm, Kermaische Schaft, L 40 mm</p> <p>Ruby ball Ø2 mm stylus, ceramic stem, L 40 mm</p>
<p>TA-MI-904 709 05 905</p>	<p>Styler bille rubi Ø4 mm, tige céramique, L 50 mm</p> <p>Kugelschreiber rubi Ø4 mm, Kermaische Schaft, L 50 mm</p> <p>Ruby ball Ø4 mm stylus, ceramic stem, L 50 mm</p>
<p>TA-MI-907 709 05 906</p>	<p>Styler cylindrique Ø0.5 mm en carbure de tungstène, L15 mm</p> <p>Zylinderstift Ø0.5 mm aus Wolframkarbid, L15 mm</p> <p>Cylindrical stylus Ø0.5 mm in tungstene carbide, L15 mm</p>
<p>TA-TO-903 297 700100 001</p>	<p>Plaque de base C4 Loc-N-Load</p> <p>C4 Loc-N-Load-Grundplatte</p> <p>C4 Loc-N-Load Base Plate</p>
<p>TA-TO-909 297 700100 007</p>	<p>Plaque de base M6, 180 x 180 mm</p> <p>Grundplatte M6, 180 x 180 mm</p> <p>Fixture plate M66, 180 x 180 mm</p>
<p>TA-TO-910 297 700100 008</p>	<p>Plaque de base M6, 180 x 360 mm</p> <p>Grundplatte M6, 180 x 360 mm</p> <p>Fixture plate M6, 180 x 360 mm</p>



<p>TA-TO-911 297 700100 009</p>	<p>Plaque d'adaptation 180 x 30 mm Adapter Platte 180 x 30 mm Adapter Plate 180 x 30 mm</p>
<p>TA-TO-912 297 700100 010</p>	<p>Plaque d'angle/stop M6, 180 x 180 mm Eck-/Anschlagplatte M6, 180 x 180 mm Angle plate/stop M6, 180 x 180 mm</p>
<p>TA-TO-904 297 700100 002</p>	<p>Set de bridge Loc-N-Load (6 pces) + kit de fixation (82 pces) Loc-N-Load Spannsatz (6 Stück) + Befestigungssatz (82 Stück) Loc-N-Load Bundled Systems (6 pcs) + fixture system (82 pcs)</p>
<p>TA-TO-905 297 700100 003</p>	<p>Set de bridge Loc-N-Load (8 pces) + kit de fixation (82 pces) Loc-N-Load Spannsatz (6 Stück) + Befestigungssatz (82 Stück) Loc-N-Load Bundled Systems (8 pcs) + fixture system (82 pcs)</p>
<p>TA-TO-906 297 700100 004</p>	<p>Kit de fixation d'initiation (62 pces) Starter-Befestigungssatz (62 Stck.) Starter work-holding kit (62 pcs)</p>
<p>TA-TO-907 297 700100 005</p>	<p>Kit de fixation complet (82 pces) Montagesatz komplett (82 Stck.) Complete work-holding kit (82 pcs)</p>
<p>TA-TO-908 297 700100 006</p>	<p>Kit de fixation multiple (158 pces) <i>*plaques de base non-inclues</i> Mehrfach-Befestigungsakit (158 Stck.) <i>*Grundplatten nicht enthalten</i> Multiple works-holding Kit (158 pcs) <i>*fixture plates not included</i></p>
<p>TA-TO-914 297 700100 012</p>	<p>Jeu de V/colonnes magnétiques (23 pièces) <i>*plaques de base non-inclues</i> Satz von V/magnetischen Säulen (23 Stück) <i>*Grundplatten nicht enthalten</i> Magnetic riser set (23 pcs) <i>*fixture plates not included</i></p>
<p>TA-TO-915 297 700100 013</p>	<p>Dispositif de positionnement (37 pièces) <i>*plaques de base non-inclues</i> Positionierungsvorrichtung (37 Stück) <i>*Grundplatten nicht enthalten</i> Stand-off & rest pad set (37 pcs) <i>*fixture plates not included</i></p>



TA-TO-916
297 700100 014

Ensemble de positionnement amélioré (16 pièces)
**plaques de base non-incluses*

Verbesserte Positionierungsbaugruppe (16 Stück)
**Grundplatten nicht enthalten*

Enhanced stand-off set (16 pcs)
**fixture plates not included*



TA-MG-901
278 900400 001

Pièce de test et d'étalonnage C-Line

C-Line Test/Kalibration Block

C-Line test/calibration block

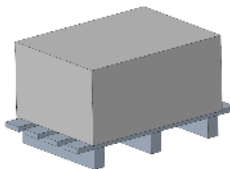


TA-TO-902
505 01100 023

Valise de démonstration C-Line

Demokoffer C-Line

Demo case C-Line



TA-TO-917
605 06 024

Groupe carton

Kartongruppe

Cardboard group



TA-TO-901
286 000400 001

Housse de protection C-Line

Schutzabdeckung C-Line

Protection cover C-Line



TA-EL-901
357 0115

Chargeur AC/DC pour C-Line

Ladegerät AC/DC für C-Line

Charger AC/DC for C-Line



TA-DU-802
616 40 028

PC Portable clavier US
(autres claviers disponibles sur demande)

PC Portable mit Tastatur US
(andere Tastaturen auf Anfrage erhältlich)

Laptop with keyboard US
(other keyboards available on request)

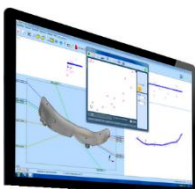


TA-SW-826
716 12 002

Logiciel de mesure Aberlink 3D; module de base pour MMT motorisée

Messsoftware Aberlink 3D, Standard-Paket, für motorisiert KMG-Messung

Measurement Software Aberlink 3D, standard package for motorized CMM

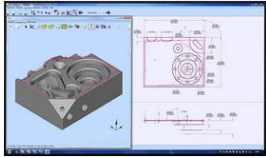


TA-SW-816
716 12 003

Aberlink 3D; module de comparaison par CAO

Aberlink 3D, CAD-Vergleich Modul

Aberlink 3D, CAD Comparison module



<p>TA-SW-817 716 12 004</p>	<p>Aberlink 3D, licence offline du module de comparaison par CAO</p> <p>Aberlink 3D, Offline-Lizenz für das CAD-Vergleichsmodul</p> <p>Aberlink 3D, offline license for CAD comparison module</p>
<p>TA-SW-827 716 12 005</p>	<p>Aberlink 3D, module programmation par CAO (inclus TA-SW-828)</p> <p>Aberlink 3D, CAD-Programmiermodul (inkl. TA-SW-828)</p> <p>Aberlink 3D, CAD programming module (TA-SW-828 included)</p>
<p>TA-SW-828 716 12 006</p>	<p>Aberlink 3D, licence offline du module de programmation</p> <p>Aberlink 3D, Offline-Lizenz für das Programmiermodul</p> <p>Aberlink 3D, offline license for programming module</p>
<p>TA-SW-830 716 12 007</p>	<p>Aberlink 3D, Interface d'Automatisation</p> <p>Aberlink 3D Automation Interface</p> <p>Aberlink 3D Automation Interface</p>
<p>TA-SW-824 716 11 002</p>	<p>Polyworks Inspector Premium, pour CMM motorisée, manuelle et scanning</p> <p>Polyworks Inspector Premium, für motorisierte CMM, manuelle und Scanner</p> <p>Polyworks Inspector Premium, for motorized CMM, manual and scanning</p>
<p>TA-SW-833 716 11 004</p>	<p>Polyworks Inspector Probing++, pour CMM motorisées et manuelles</p> <p>Polyworks Inspector Probing++, für motorisierte, und manuelle CMM</p> <p>Polyworks Inspector Probing++, for motorized and manual 3D CMM</p>

